

# Testing Heating Element Instruction Manual



Model: MC-C01

## **Important Safeguards**

To reduce the risk of personal injury or property damage, when using electrical appliances basic safety precautions should always be followed, including the following:

- Read all instructions.
- Make sure nothing is turned on or plugged in until the water is completely covering the element.
- The outside of the tank will get HOT, use caution and keep children and pets away.
- Unplug from outlet when not in use and before cleaning. Allow cooling before putting on or taking off parts, and before cleaning.
- SAVE THESE INSTRUCTIONS

---

If you experience any difficulties with your equipment, have questions or suggestions, please contact  
Technical Support at... [customer care@discountsoapequipment.com](mailto:customer care@discountsoapequipment.com)

© 1995-2019 E&M Machining, Inc

765-754-3613 - [discountsoapequipment.com](http://discountsoapequipment.com) - [emmachining.com](http://emmachining.com)

Frankton, Indiana  Made in the USA



### TESTING YOUR HEATER ELEMENT

#### Tools needed.

- Philips screw driver
- Volt / Ohm meter (Multi-tester)

#### **BEFORE TESTING YOUR ELEMENT, UNPLUG YOUR HEATER THERMOSTAT.**

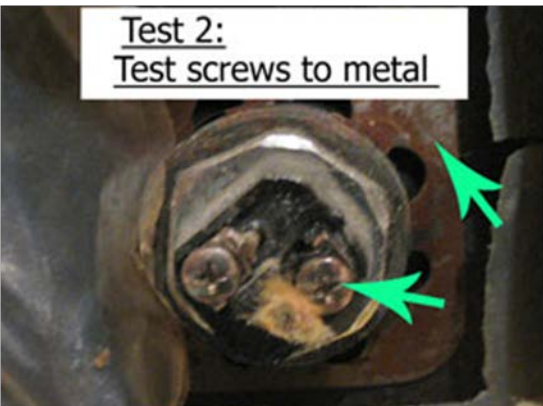
DISCONNECT THE WIRES TO THE HEATER ELEMENT.

**CALL AN ELECTRICIAN IF YOU DON'T KNOW WHAT YOU ARE DOING!**



**Test 1:** Test across both element screws and resistance should read close to the following Ohms.

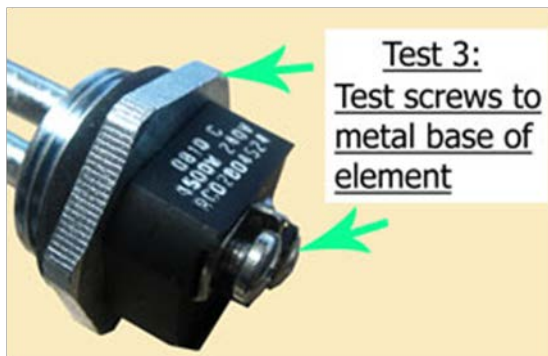
- 1500 watt element, (115V), about 8 to 10 Ohms
- 3000 watt element (220-240V), about 16 to 19 Ohms.
- 4500 watt element (220-240V), about 11 to 13 Ohms.



**Test 2:** Test each screw to bare metal part of water heater.

Test both screws.

If multi-meter reads any Ohms at all, or if needle moves even tiny bit, then element is shorted and needs replacement



**Test 3:** Test each screw to metal base of element.

If multi-meter reads any Ohms at all, or if needle moves even tiny bit, then element is shorted and needs replacement

Your element and controls should last many, many years.

There are three reasons your element can burn out...

Old age (10 or more years), no water, not enough water, sediment in the tank.

If you experience any difficulties with your equipment, have questions or suggestions, please contact  
Technical Support at... [customer care@discountsoapequipment.com](mailto:customer care@discountsoapequipment.com)

© 1995-2019 E&M Machining, Inc

765-754-3613 - [discountsoapequipment.com](http://discountsoapequipment.com) - [emmachining.com](http://emmachining.com)

Frankton, Indiana  Made in the USA